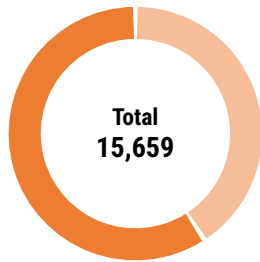


FACTS AND FIGURES



Damage Status - Private Structures

MAJOR HOUSING TYPOLOGIES

Typology	Municipal	District
Stone and Mud Mortar Masonry	32.58%	53.21%
Timber Frame Structure	27.56%	25.88%
Brick and Cement Mortar Masonry	25.43%	10.51%
Reinforced Cement Concrete (RCC) Frame	6.75%	1.99%
Others	7.69%	8.41%

CBS damage assessment survey, 2015

HOUSING RECONSTRUCTION & RETROFIT UPDATES

Reconstruction Status

Total Eligible HHs	10,611	
PA Agreement	7,799	2,812
I st Tranche received	8,672	1,939
II nd Tranche received	4,740	5,871
III rd Tranche received	3,137	7,474

Houses

Under Construction: - Completed: -

Retrofitting Status

Total Eligible HHs	1,788
PA Agreement	0
I st Tranche received	376 / 1,412
II nd Tranche received	1,788

Grievances

Registered: -
Addressed: -

Non-compliances

Registered: -
Addressed: -

Data Updated on: 2019-08-31 00:00:00

PO Presence

Active: BC (Shelter)

Phased Out: FCA (Education), HELVETAS (Shelter), NRCS (Health), PLAN (Education), PLAN (GESI), PLAN (Hygiene), SwissC (Shelter)

STATUS OF CONSTRUCTION MATERIALS

Materials	Unit	Req. Quantity*	Ava.	Cost (NRs.)**
Stone	m ³	11,051	-	-
Aggregate	m ³	9,518	-	-
Sand	m ³	1,165	-	-
Timber	cu. ft.	1,287	-	-
Cement (PPC)	Sack	-	-	-
Cement (OPC)	Sack	32,977	-	-
Rebars	kgs.	124,060	-	-
Tin	bundle	1,352	-	-
Bricks	pcs.	417,653	-	-

Types of Workers

1. Skilled mason
2. Labourer

Avg. daily wage (NRs.)

1,200 /-
800 /-

OTHER SECTORS



Schools

Damaged: 77
Under Construction: 38
Construction Completed: 38



Health Posts

Damaged: -
Under Construction: -
Construction Completed: -

KEY CONTACTS

Municipal Office
Khadga Bahadur Khatri
Mayor
9854041029

Municipal Office
Focal Person

Municipal Office
Manju Devkota
Deputy Mayor
9844045830

DLPIU-GMaLI
Surya Prakash Bista
DLPIU-Chief
9843208907

Municipal Office
Prushottam Subedi
Chief Administration Officer
9854050111

DLPIU-Building
Prabhakar Lal Karna
DLPIU-Chief
9854041543

HHs WITH LAND ISSUES



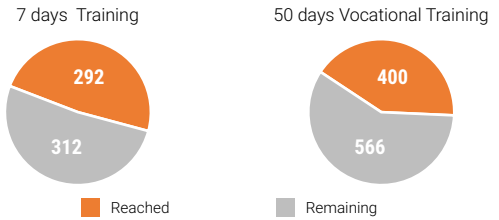
STATUS OF TECHNICAL STAFF

Staff	Available Nos.	Additional Req. Nos.
Engineers	12	-
Sub-Engineers	7	-
Asst. Sub-Engineers	6	-
Masons	- (7 days) - (50 days)	- (7 days) - (50 days)

Source: Municipal survey

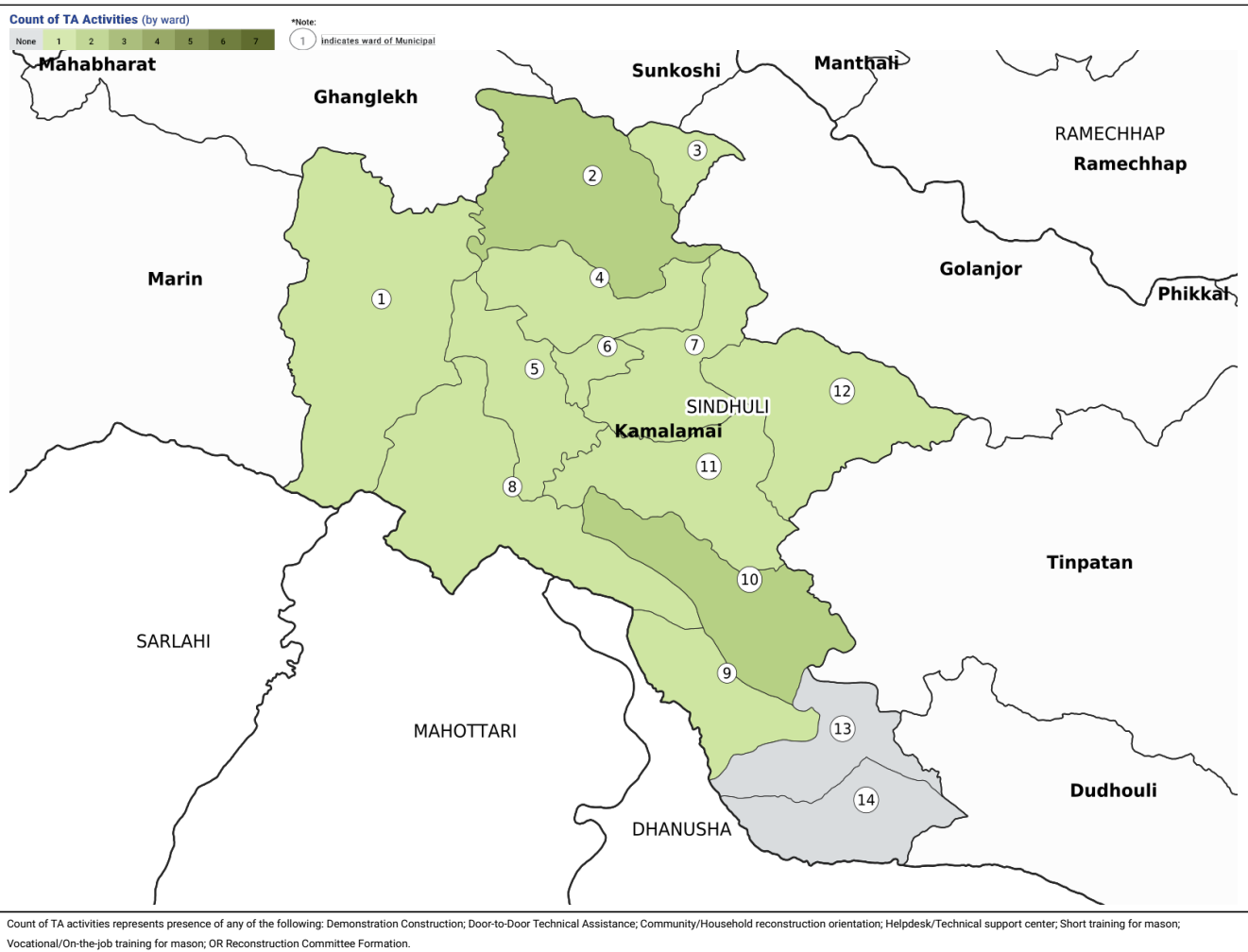
MASON TRAINING

Trainings (# out of total required)



Source: HRRP Analysis

TA ACTIVITIES MAP



FAQs

Q: What documents are required for enrolment in the GoN housing reconstruction programme?

A: Two copies of passport size photos and original copy and photocopy of land ownership card and citizenship card. Local officials at the Rural / Urban Municipality will be able to provide information and support and households can enrol at the Rural / Urban Municipality.

Q: Do we need to pay the engineers when they come to conduct inspections or provide technical assistance?

A: No, you do not have to pay the engineers, or any other staff, conducting inspections or providing technical assistance. If any field staff request payment for conducting inspection or providing technical assistance you should report it to the Rural / Urban Municipality officials.

For further information

1. Prabin Gautam (General Coordinator) 9860687776	2. Tulasi Ram Lamichhane (Technical Coordinator) 9851213610	3. Pranjal Singh Bhandari (Information Management Officer) 9840057752
--	--	--